

MIRROR²

demonstration

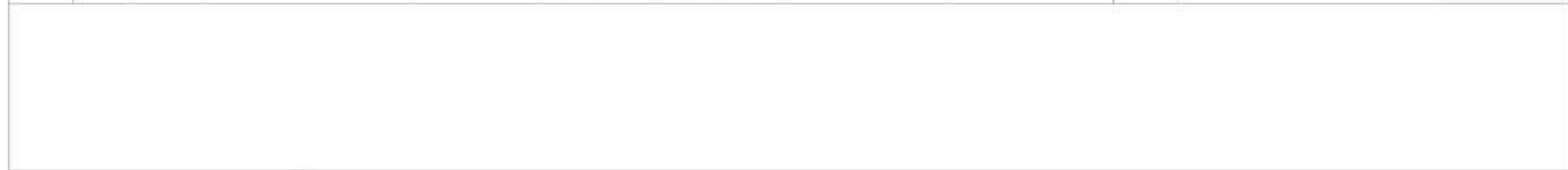
Project Ideas

smart mirror – messages on screen

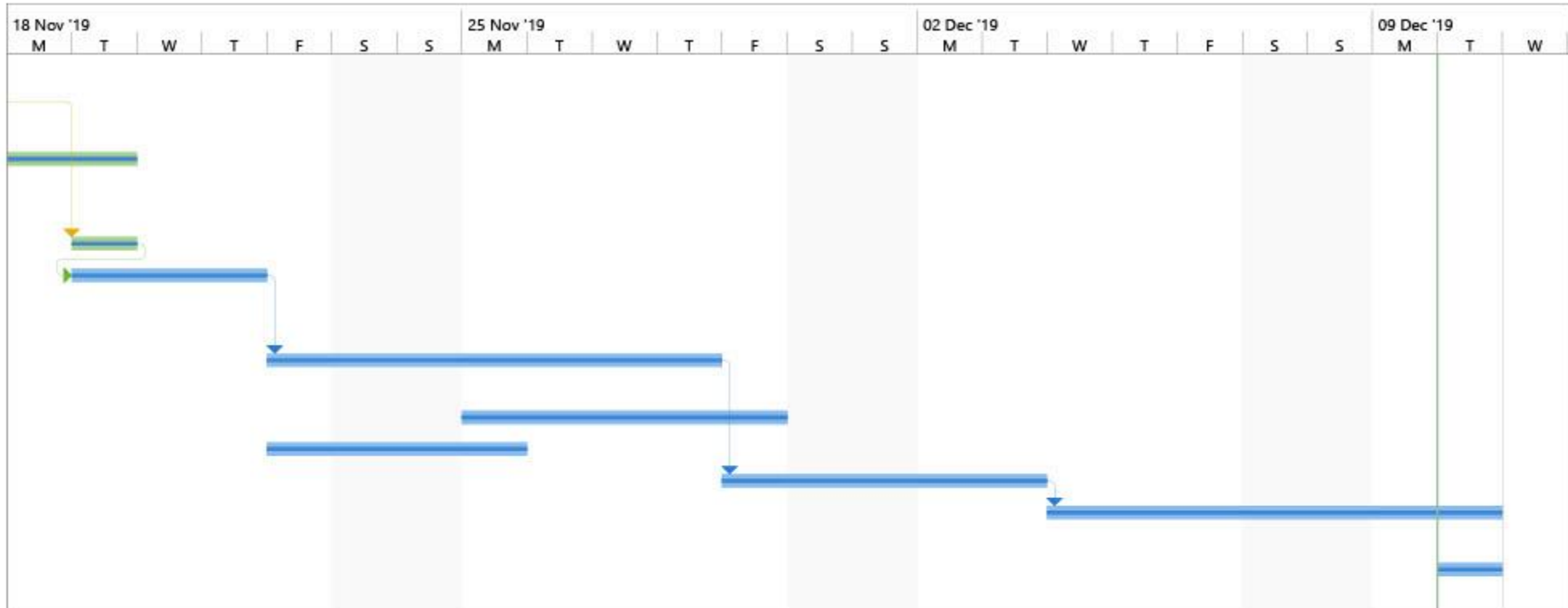
interaction – voice recognition

assembling – Wi-Fi connection

ID		Task Mode	Task Name	Duration	Start	Finish	Predecessors	Resource Names	11 Nov '19							
									M	T	W	T	F	S	S	
1	<input checked="" type="checkbox"/>		Brainstorm Ideas	1 day	Tue 12/11/19	Tue 12/11/19										
2	<input checked="" type="checkbox"/>		Pick final project idea	1 day	Fri 15/11/19	Fri 15/11/19	1									
3	<input checked="" type="checkbox"/>		Decide on features function and design of Smart Mirror	3 days	Fri 15/11/19	Tue 19/11/19	2									
4	<input checked="" type="checkbox"/>		Create Lo-Fi Design	1 day	Tue 19/11/19	Tue 19/11/19	2									
5	<input checked="" type="checkbox"/>		Research Modules needed to fulfil design	3 days	Tue 19/11/19	Thu 21/11/19	4									
6	<input checked="" type="checkbox"/>		Order Modules needed	5 days	Fri 22/11/19	Thu 28/11/19	5									
7	<input checked="" type="checkbox"/>		Create Server	5 days	Mon 25/11/19	Fri 29/11/19										
8	<input checked="" type="checkbox"/>		Decide on Display	2 days	Fri 22/11/19	Mon 25/11/19										
9	<input checked="" type="checkbox"/>		Test Modules	3 days	Fri 29/11/19	Tue 03/12/19	6									
10	<input checked="" type="checkbox"/>		Test and Improve Program	5 days	Wed 04/12/19	Tue 10/12/19	9									
11	<input checked="" type="checkbox"/>		Assemble Everything	1 day	Tue 10/12/19	Tue 10/12/19										



Project: ECS 511U Group Projec Date: Tue 10/12/19	Task		Inactive Summary		External Tasks	
	Split		Manual Task		External Milestone	
	Milestone		Duration-only		Deadline	
	Summary		Manual Summary Rollup		Progress	
	Project Summary		Manual Summary		Manual Progress	
	Inactive Task		Start-only			
	Inactive Milestone		Finish-only			



Project: ECS 511U Group Projec
Date: Tue 10/12/19

Task		Inactive Summary		External Tasks	
Split		Manual Task		External Milestone	
Milestone		Duration-only		Deadline	
Summary		Manual Summary Rollup		Progress	
Project Summary		Manual Summary		Manual Progress	
Inactive Task		Start-only			
Inactive Milestone		Finish-only			

Utility

quick access to basic everyday information without the need to check another device

Usability

easy interaction based on voice recognition and screen response

Experience

fun and easy to use for anyone

easy to assemble

Conceptual Model

mirror with a small screen on the side for the user to see the information they're asking for

microphone on top of the mirror for the user to give voice instructions

Visibility

microphone – indicates need of voice instructions

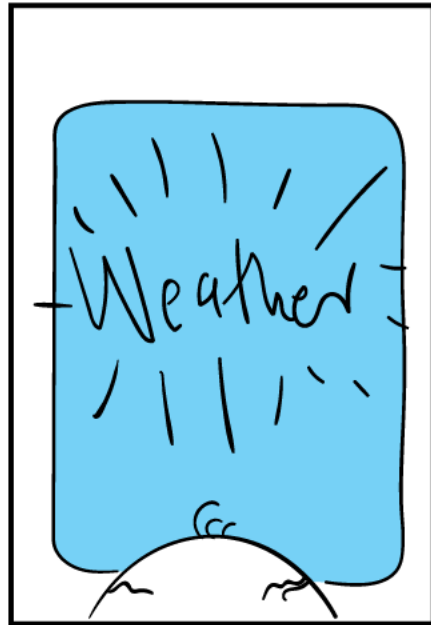
Mapping

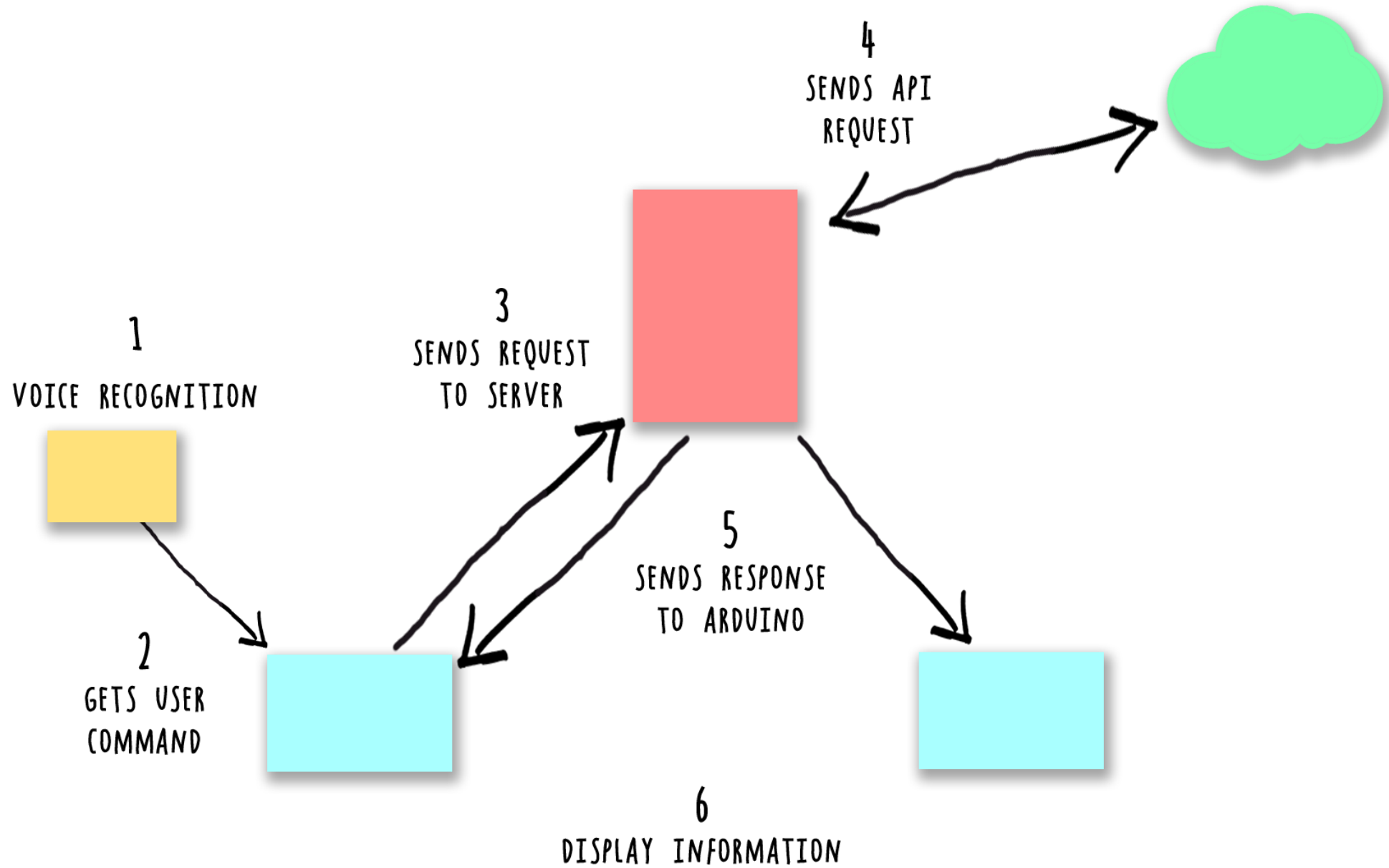
message on screen asking for voice instructions

Feedback

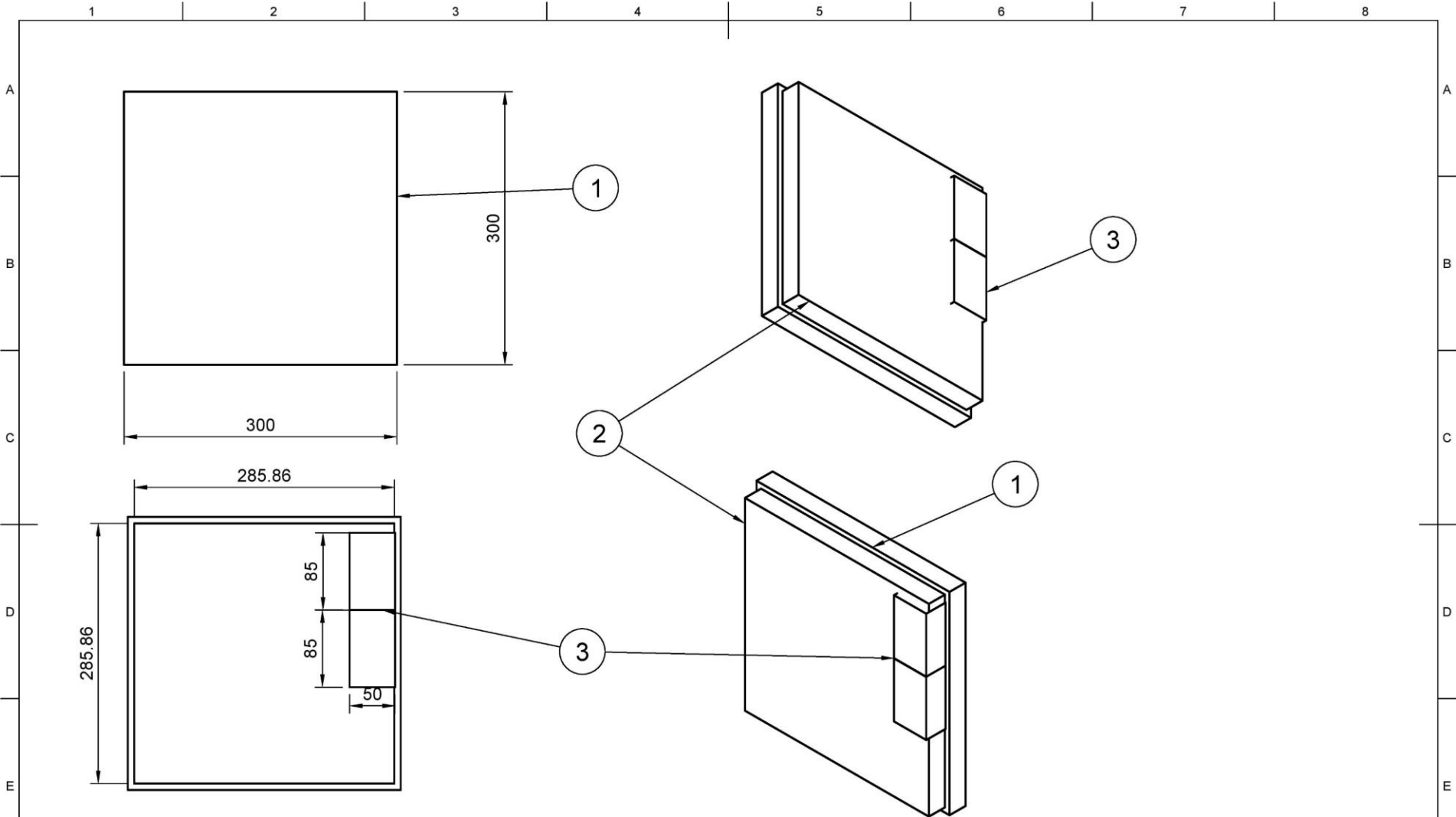
loading symbol

messages on the screens - visual





Solutions - Hardware



Item	Qty	Part Number	Description	Material
3	2		LCD Screen	Steel
2	1		Shadow Box	Steel
1	1		Mirror	Steel
Parts List				

Dept. ECS511U	Technical reference	Created by Group 2	05-Dec-19	Approved by
		Document type Isometric Drawing	Document status Completed	
Title Assembly Drawing of Smart Mirror			DWG No.	
Rev. 2	Date of issue	Sheet 1/1		

future improvements

proximity sensor

improve Wi-Fi modules

remove Arduino

voice feedback

bigger variety of queries

MIRROR²

carolina, matthew, roberto, abhigyan